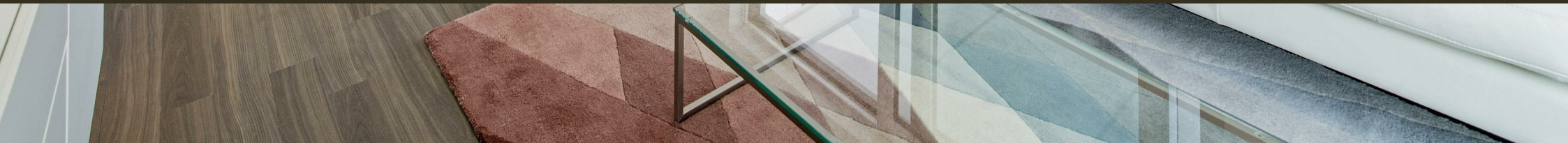




Bach House, 50 Wandsworth Road  
London SW8

GARTONJONES.COM



# Bach House, 50 Wandsworth Road London, SW8

GARTON JONES.COM

9 Albert  
Embankment  
London  
SE1 7SP

Lettings:  
+44 (0) 20 7735 1888  
nineelms@gartonjones.com  
www.gartonjones.com

## £550 Per Week

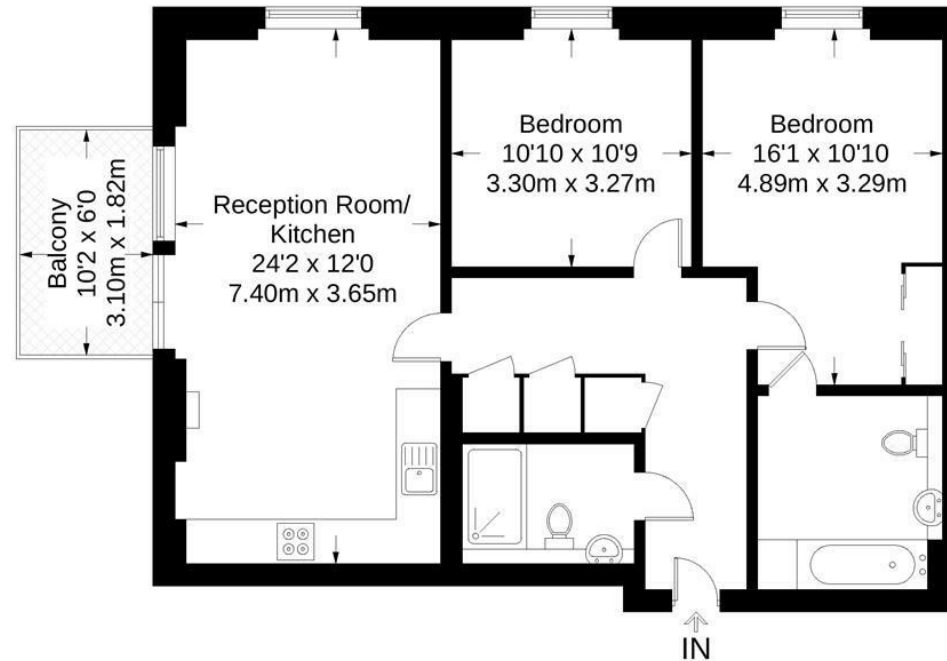
A spacious 2 double bedroom apartment to rent of approx. 810sq.ft (75.20sq.m) in Bach House, located within the Nine Elms Point development by Barratt London, close to the River Thames and the new US Embassy building in Nine Elms. This furnished property benefits from a dual aspect open plan reception room with a smart kitchen with AEG integrated appliances including a wine cooler, there is a large private balcony, 2 luxury bathrooms (1 en-suite) and good storage including a utility cupboard housing an AEG washer/dryer and fitted wardrobes to both bedrooms. Nine Elms Point has a 24-hour concierge, residents gym, business suite and a cinema screening room. You will be located a few minutes' walks from the excellent transport services of Vauxhall including rail, tube and bus links as well as a river taxi pier at St George Wharf and there will be a large onsite Sainsbury's supermarket to complement a good selection of local shopping facilities and restaurants.

- 857sq.ft (79.6sq.m)
- 2 Double Bedrooms
- 2 Bathrooms (1 En-Suite)
- Dual Aspect Open Plan Reception Room
- Large Private Balcony
- 24 Hour Concierge
- Residents Gym, Cinema Screening Room & Business Lounge
- Close to The Excellent Transport Links of Vauxhall



## Bach House

Approximate Gross Internal Area = 857 sq ft / 79.6 sq m



Not to scale, for guidance only and must not be relied upon as a statement of fact.  
All measurements and areas are approximate only and have been prepared in accordance with the current edition of the RICS Code of Measuring Practice.

